

Technical Data Sheet

Peter Kwasny GmbH, Heilbronner Str. 96
74831 Gundelsheim / Germany
Phone: +496269 95-0, Fax: +496269 95-80
www.spraymax.com / www.kwasny.com / info@kwasny.de

belton® perfect

desert sand

150 ml

Art. Nr. 328403



Product

Description / Area of use

Water-based, odourless and highly pigmented design paint spray for individual trend colours in a silky matt look. Suitable for many substrates such as metals, wood, many plastics, cardboard, paper, stone, clay, glass, ceramics and polystyrene.

The quick-drying product can be used indoors and outdoors. Weather and UV resistant.

For maximum colour intensity and perfect coverage.

Smooth spray technology guarantees the finest atomisation, velvety flow and flawless surfaces.

Easy to use even for inexperienced users and convincing by perfect painting result.

Product benefits

- Highly pigmented quality paint spray
- Water-based
- Odourless
- Fast drying
- High coverage and yield
- Fine atomisation by Smooth Spray technology
- Perfect painting results
- Weather and UV-resistant, for indoors and outdoors

Material base

Water-based polyurethane dispersion

Substrate

Ferrous metals, wood, many plastics, glass, polystyrene, cardboard, paper, clay, stone, ceramics, plaster (walls), concrete.

Check plastic substrates for suitability.

Do not coat safety-relevant plastic parts, e.g. safety helmets. Check on old paintwork, as surface defects may occur.

Processing

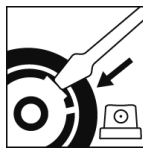
Protection measures



Wear personal protection equipment.
(gloves / goggles)

For more information, see safety data sheet.

Spray protection

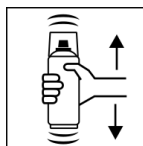


Remove the spray safety device by first removing the spray head. Insert a screwdriver between the tab and the retaining ring.

Lift out the fuse with a gentle downward movement.

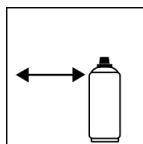
Keep these and use it again as spray fuse when work is finished.

Shake



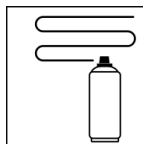
Shake can thoroughly for 1 minute
- starting from when the mixing balls are heard.

Spraying distance



20 - 30 cm

Spray passes



with 2 - 3 cross coats: approx. 50 - 60 µm

Precoat with a thin spray coat.

After 3 - 5 min. apply a final opaque coat.

Observe an intermediate flash-off time of 3 - 5 min.
between the spray coats.

Processing conditions



The ideal working temperature is 15 - 25° C.

Avoid direct sunlight and draughts.

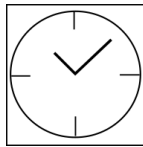
The relative humidity should be < 60 %.

The surface to be painted must be clean, dry, derusted and free of release agents (e.g. grease, oil)

Sand the substrate.

Please ensure adequate ventilation.

Drying



dust dry: after approx. 35 min

dry to touch: after approx. 70 min

fully cured: after approx. 24 hours

Can be recoated with itself at any time,
with belton perfect transparent after 3 hours.

Painting structure

For substrates such as absorbent wood, treated wood, galvanised steel, aluminium, ceramic and non-ferrous metals (NE metals), the use of a primer is required. For permanent corrosion protection, a primer is generally recommended.

Problematic plastics should be primed with belton plastic primer (solvent-based Art. No. 323505) beforehand.

Paintwork (without primer):

1. belton perfect (colour tone)
2. If necessary, paint over with belton perfect transparent, for an even higher durability of the coating.

Paintwork (with primer):

1. belton basic primer for the respective substrate
2. belton perfect (colour tone)
3. If necessary, paint over with belton perfect transparent, for an even higher durability of the coating.

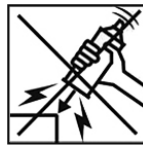
Finish



After finishing the painting process turn the can upside down and spray the valve empty for 3 - 5 sec. Wipe the spray head with a damp cloth to prevent the paint from drying.

Additional Information

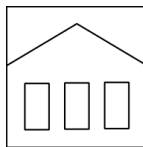
Please note



Avoid bumps, friction and impact.

The smaller the spraying distance, the higher the working speed must be when spray painting.

Shelf Life



The can has to be stored and transported in upright position between 15 - 25° C and a relative humidity of not more than 60 %, and protected from chemical and mechanical influences.

The safety instructions on the can as well as all legal provisions of the storage location have to be noted.

Disposal



The completely emptied spray cans must be disposed of in the recycling system. Cans with hardened material must be disposed of as special waste.

Note

Before use, the safety instructions on the label of the spray can have to be read and considered carefully.

The contents in this technical data sheet were created with great care and reflect our current state of knowledge. They provide the user with application-specific information and do not promise certain properties. The information is non-binding and we accept no liability for its integrity, accuracy and completeness. They do not relieve the user of their duty to check the suitability of our product for the intended purpose. The warnings printed on our labels must be respected. Our brands and patents are protected by copyright. All rights reserved We reserve the right to update, amend or supplement the content of the information without prior notice.